



Glasgow Humane Society

226 years of service

Operational report to the Annual General Meeting June 2016

George G Parsonage Senior Consultant Officer

William Graham Officer

Ben Parsonage Part time Assistant Officer

The following statistics include what we achieved last year plus operational work undertaken until June this year.

Operation Work January 2015 to June 2016

River Patrols	1727
Bank Patrols	2237
Lifebelts Retrieved/Replaced	696
Meetings Held/Attended	247
Lost/Stolen Goods	15
Talks/Presentations given	26
Accidents Prevented	24
Hazards Removed	238
Acute Rescues	18
Rescues Attended/Assisted	15
Animal incidents	19
Searches	484 days
Events given safety cover	93
Training Courses Held	27
Missing persons recovered	2

POLMADIE BRIDGE

Going...going...gone

On the water we had major problems brought about by the closure of the river upstream of Polmadie Bridge which necessitated, the looking after of several hundred craft practicing on a 1200 metre stretch of river, with them being forced into closer proximity of the weir than normal.



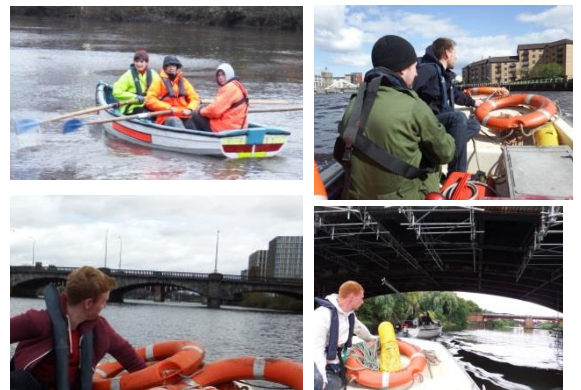
DAILY WORK



The Commonwealth Games legacy is now a reality.

Safety patrols on the water and on the banking have as usual been carried out by Officers and Volunteers.

Lifelbelts have been retrieved from the river, cleaned, Samaritan stickers attached and the lifelbelts replaced on stances. New GPS signs were attached to stances as required, others cleaned or repaired.



Assistance and advice on waterway safety is regularly given to members of the public, event organisers and other official organisations.

Numerous accidents have been prevented by proactive action, acute rescues have been carried out and assistance has been given during other incidents.

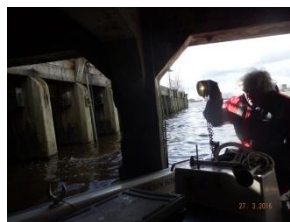
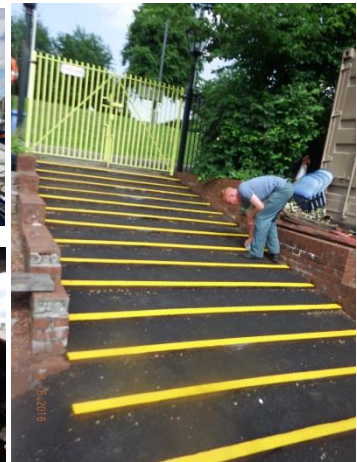


Talks and presentations have been given by the GHS to a number of organisations on the topic of waterway safety and GHS history.

There is always maintenance work to be carried out

Many hazards have been removed, thus preventing accidents.

Animal related incidents have been dealt with.



Searches for missing persons were carried out with most being found safe and well nowhere near the river.

A number of training courses have been organised and conducted, including RYA safety boat courses and rope throwing courses.



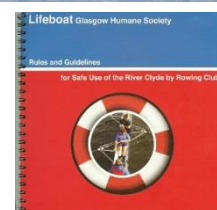
Through the auspices of the Water Safety Group, founded by Glasgow Humane Society organised by Glasgow City Council, much excellent safety work has been carried out and we are committed to ensuring best practice in this respect.

An online magazine "Tales of the Riverman" is being regularly circulated. Anyone who wishes to be added to the distribution list should intimate so by e mailing glasgowlifeboat@yahoo.co.uk

Glasgow Humane Society look after all river users in the tidal area upstream of the Tidal weir and Pipe Bridge at Glasgow Green.



The Rules and Guidelines for various types of River users and Booklets on advice for safe waterway edge design drawn up by myself in conjunction with the rowing clubs and the City Council, continue to add greatly to the feel safe attitude that prevails on the river, though it can be hard work persuading persons to impose self-discipline, and when there are no accidents people can become blasé. When you look at the number of incidents and accidents occurring on other waterways throughout the United Kingdom and abroad we are indeed lucky in Glasgow. It is interesting to note that on our narrow river with over 500 boats racing about at peak times, we are almost self-regulating, while on other rivers emergency services have the highest call out rates in the UK.



Glasgow Humane Society continues to work in close partnership with all departments of the Glasgow City Council, with Clydeport, Police Scotland (Glasgow), and a multitude of other groups.



Thanks of course must go to those who assist

Lifeguards:-Ben Parsonage, Colin Munn, Graeme McGrath, Jamie Park, Cameron Grant, Christopher Parsonage, Stephanie Parsonage, Adam Rzepinski, Jonathan Currie, Callum Sutherland, Marc Haniford, Gavin Lamb, Andrew Orr, Seamus Keating, Alex and Lynne MacDonald, Tom A’Hara, William Graham, Ross McPherson Mark Dickson, Atishay Sinha, David Hearn, Kevin Baker, Wan Ian Tran, Graeme and Craig Hurst, Nicky Ross, and members of Strathclyde University Boat Club



We also had a group from Hutcheson Grammar School for 3 days learning what it is like to work as a lifeguard at the Glasgow Humane Society

Riverwatchers, other supporters and of course our Directors and Members

Glasgow Humane Society as ever is ready and willing to rise to this challenge.

This attachment shows the work being done by the Glasgow City Council Water Safety group



The Glasgow City Council Water Safety Group

Persons have requested learning of the work carried out by the Glasgow City Council Water Safety Group which is an advisory group founded in 1999.

A history of the Group can be found on the Glasgow Humane Society web site www.glasgowhumanesociety.com Resources; Water Safety Group

The Group has the following invited membership

Glasgow Humane Society

Departments of the City Council

Police Scotland

Scottish Fire and Rescue

City of Glasgow College (Nautical section)

Peel Ports (Clydeport)

Other groups attend as requested

Groups who have attended or requested advice

Lochwatch Loch Awe

Safe Tay

Ayrshire Council

Inverclyde Council

Foyle Search and Rescue

Thanks must be given to Glasgow City Council for recognising the seriousness of water safety and to the various Council Departments who have chaired this Group since its inauguration.

The following summarises the work carried out at the request of the Glasgow Humane Society and the Glasgow Council Water Safety Group

Regular ongoing work

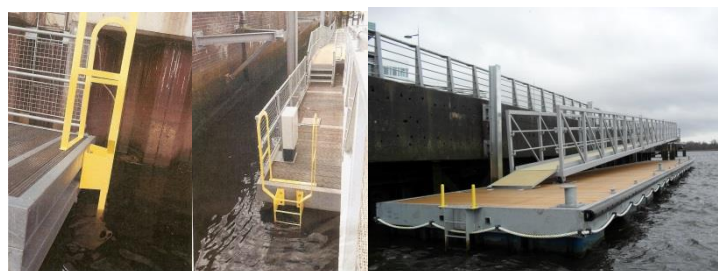
Advising GCC weekly planning when required on development beside waterways

Ensuring adequate quay wall ladder provision with where necessary semi circles cut in coping throughout Harbour area



Staff trained and extra equipment kept on premises at Science Centre, Quay Complex, Rowing Clubs, Tidal Weir, Boathouse Inn Cambuslang, Crowne Plaza Hotel, STV, and Ferry Nightclub

Egress ladders placed on pontoons-painted yellow



Removal of fenders from egress points on pontoons

Lifebelt positions identified, and given GPS number along towpath at the Village

Recent work

Centre safety bar and lifebelt provision for Stobcross Quay fencing



Centre safety bar to fencing below Kingston Bridge



Centre safety bar to fencing at Clyde St.



Gate repaired and locked at river Kelvin



Centre safety bar to fencing at Harland's Way Govan



Safety advice given re water quality in conjunction with SEPA

Monitoring and advising on Scottish water developments

Removal of debris



Lifebelt boxes removed at Shawfield-poles and hooks left



Lifebelt hooks on gates at Carlton Place-GPS numbers to follow



Lifebelt placed in centre of Smart Bridge

Fencing placed round Suds Pond at Shawfield



Fencing and gates round Suds Ponds at Games Village



As necessary boats escorted through Polmadie Bridge during demolition work



As necessary boats escorted through Albert Bridge during renovation work



Lowness of water sorted out—unable to launch boats from steps



Repaired floating boom at Broomielaw Pontoon



Lifebelt retrieved and replaced at Emirates



Extra emergency and maintenance access gates on riverbank fencing throughout Glasgow Green



Unfortunately due to the dense overgrowth these gates cannot be used until bank maintenance work is carried out.

Riverside steel steps removed at Adelphi Centre

Removal of concrete blocks to allow emergency and maintenance access



Riverbank rubbish/fly tipping removed-note-if the boom gate had not been there this settee would probably have ended up in the river



Lifebelt hook to gate at Clyde St/Union Bridge and painted yellow

Broken fencing and gate repaired at Richmond Park Pond

Development of GPS system



Ensuring adequate access points to towpath for emergency and maintenance vehicles

Necessary river signage



Chain link fencing repaired at Suds Pond Dalmarnock

Trees removed from Dalmarnock, Dalmarnock Railway, Rutherglen, Polmadie, Kings Bridges and tidal Weir



Pole hooks made for use at Tidal Weir

Ring hooks made to expand gate emergency “Daisy Chain” system



Safety advice given to Regatta and other event organisers



Boom Gate placed Waterside Street

Damaged fencing repaired at Glasgow Green

Damaged fencing repaired at Oatlands



Damaged fencing at Rutherglen Bridge temporarily repaired.

Lifebelt hooks placed towards centre of Lower Suspension Bridge



Police Scotland Riverside Cycle Patrol Unit joined WSG

Broken fencing at Finnieston/Elliot St repaired

Rusted locks and chains removed and replaced on riverside gates between Finnieston Crane and Pump House—gates now on “daisy chain system”



Harland’s Way centre safety bar and signage

Lifebelt supplied as requested to residents of Wanlock St Govan



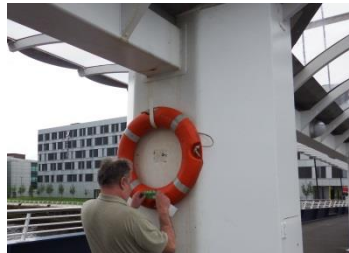
Boom gate at Carlton Place repaired

Signage at Carlton Place riverbank reinstated

Safety access sorted out at Hogganfield Loch-boom gate with Daisy chain system-we cannot have locks when no one knows who has the key



Gate/fence at Kelvingrove Park/River Kelvin repaired



Lifebelt position centre of Bells Bridge

Samaritan stickers placed on all lifebelts

Boom gate at Dalmarnock repaired



Boom gate at Belvidere west repaired



Boom gate at Belvidere east repaired

Fencing erected at Shawfield



Boom gate and fencing at Tollcross repaired



Boom gate at Carmyle repaired

Lifebelt hook replaced on riverbank pole at Dalmarnock Bridge

Repaired gate at East Boathouse



Scottish Water advised re safety barriers at Carmyle



Fencing round Suds Pond at Gateway



Work being arranged

Govan fence (Warlock Street) centre safety bar



Reserve Lifebelt and Rope to be kept at Sheriff Court

Govan new walkway lifebelt provision and GPS signage agreed

Agreement reached on safety alterations at Camlachie outflow

Steps for north east corner of Clyde Arc leading up from Stobcross
Quay

Fencing for Jennies Burn

Cleaning of Broomielaw Pontoon

GPS for Shawfield

GPS for Harbour Complex

GPS and lifebelts for all Scottish Water outfalls



Proper fencing and maintenance required at Emirates Suds Pond



Still to be done at the Riverside Museum-Lifebelt positions still to have GPS signs and extra safety bar fitted to railings



Access problems upriver-bollards require to be replaced with boom gates



Fencing on riverbank side opposite foot of stairs to riverbank to be arranged



Bollards at Ferry Brae to be replaced with boom gate to allow emergency and maintenance access



GPS and Lifebelts for Cunningar



Damaged fencing at Princess Dock-temporary repair carried out by Science Centre personnel



Extension poles for lifebelt poles to enable GPS signage to be above easy reach of vandals