



227 years of service

Operational report to the Annual General Meeting June 2017 by George Parsonage

The Glasgow Humane Society continues to serve the public of Glasgow and the visitors to our great city.

The City, the Country, the World is full of problems that require to be looked at, but I cannot apologise for being extremely parochial in my following comments, only looking at water safety throughout our wonderful City.

Glasgow

It has been said that “Glasgow is Miles Better”

Maybe our saying should be “Glasgow---- light years ahead”

If we look at what is happening water safety wise in other Cities across the UK, Glasgow is lucky. Many Cities are now spending many thousands of pounds on safety surveys to see how they can make their territory safer.

The Glasgow Humane Society has been giving this service to the Greater Glasgow area for over 226 years.

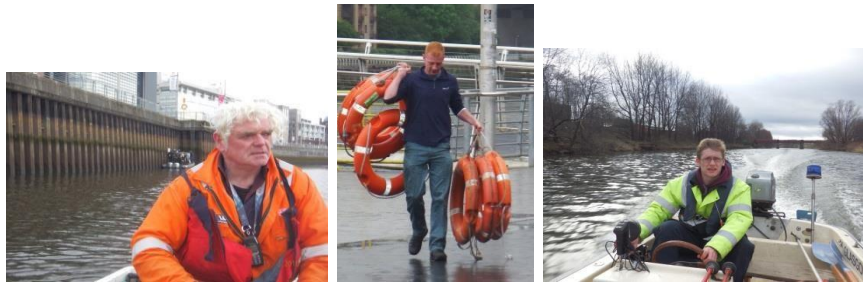
More Independent Lifeboats are being set up along our coastlines and in our Lochs/Lakes Rivers and other waterways. There are possibly more Independent Lifeboats in the UK than there are RNLI.

Glasgow has had this service since the time of the French Revolution.

Glasgow has set and is setting a standard in waterside development incorporating safety. While others spend-spend-spend on consultancies we do it in-house with a combination of the Glasgow Humane Society and the Glasgow City Council Water Safety Group—founded by the Humane Society

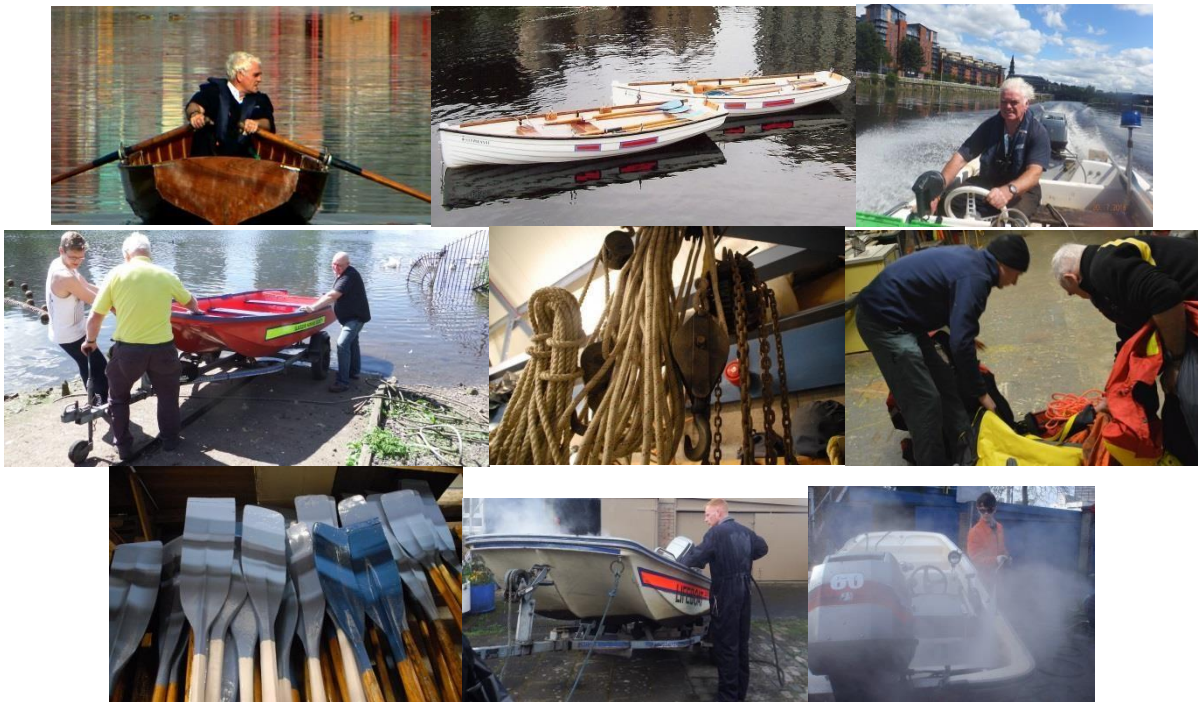
Officers, Directors and supporters of the Glasgow Humane Society, Councillors City Employees and Citizens must be, and rightly should be, proud of our partnership.

The operational set up involves myself (George Parsonage) overseeing the duties of our Officer in training, William Graham, and our part time Officer Ben Parsonage, ably assisted by the voluntary work of Chris Parsonage, Stephanie Dancer and the senior Lifeguards Graeme McGrath and Colin Munn.



Ann Parsonage continues to give Talks about the Society.

We operate and maintain a selection of different types of boats and other necessary equipment at and from our operational headquarters at Glasgow Green, the same spot at which the Society started in 1790.

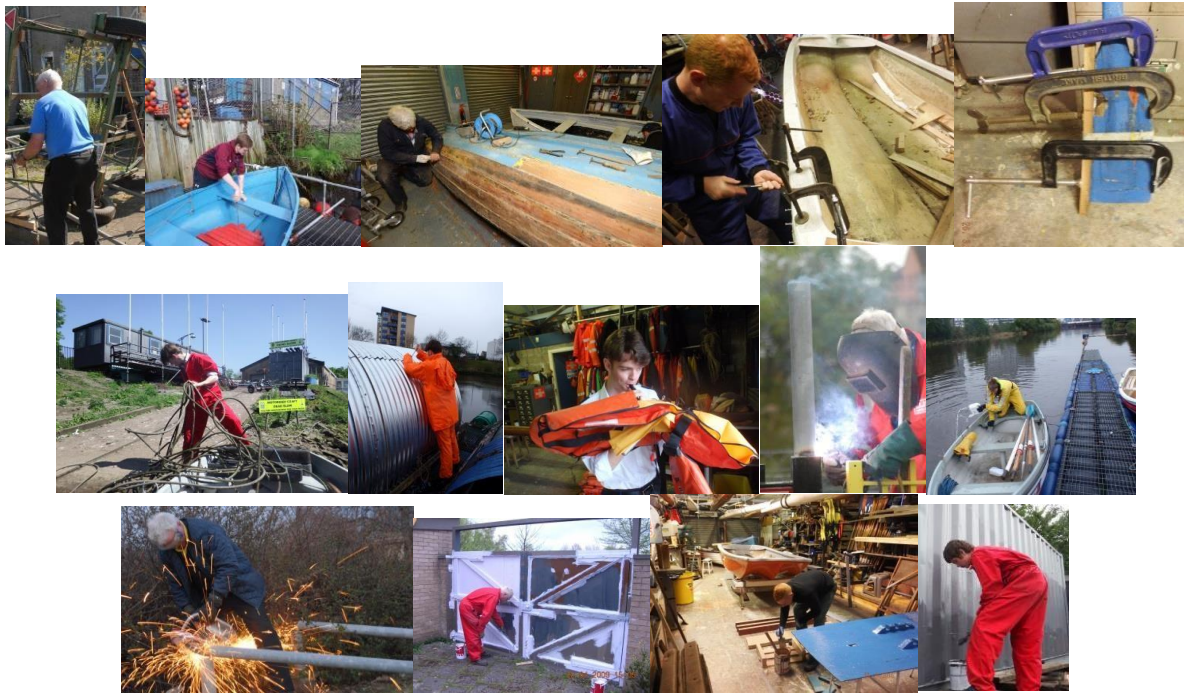


Much of our work is trying to ensure the safety of river and riverbank users in the tidal section upstream of the Weir and Pipe Bridge at Glasgow Green.

During Regatta and Event coverage, 12 Society boats can be on the water.



Maintenance can involve anything from day to day repairs, to the rebuilding and customising of craft.



Due to a flooding incident early in 2016, we undertook a major repair to one of the motorised craft and a new engine has been purchased by fundraising.

The Society buildings and wharfage area are also kept in reasonable working order by the group.

Opportunity tends to come to those who are prepared and every effort is made to have the necessary craft and equipment to answer any call for assistance the Society receives.

A web site www.glasgowhumanesociety.com is also kept up to date and along with our pages on Facebook Flickr and You Tube gives a good insight into the working of the Society.

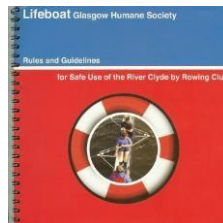
Many parties look to the Society Web site to collect necessary information ranging from Tide times, Rules and Guidelines, bridge names, architectural and planning advice, workboat regulations to historical records

We give safety advice based on years of experience and expertise.

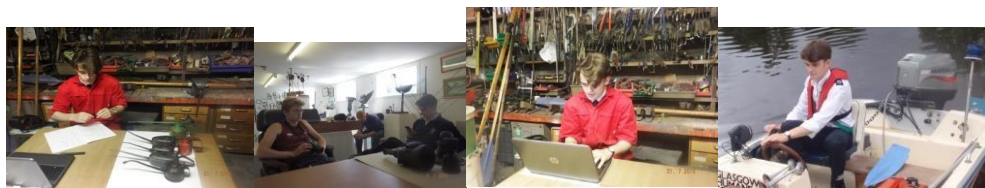
The Rules and Guidelines for Safe use of the River Clyde by Rowing Clubs and an accompanying map are being at present developed into a poster

These Rules and Guidelines for various types of River users and Booklets on advice for safe waterway edge design continue to add greatly to the feel safe attitude that prevails on the river, though it can be

hard work persuading persons to impose self-discipline, and when there are no accidents people can become blasé. When you look at the number of incidents and accidents occurring on other waterways throughout the United Kingdom and abroad we are indeed lucky in Glasgow. It is interesting to note that on our narrow river with over 500 boats racing about at peak times, we are almost self-regulating, while on rivers like the Thames, due to boating accidents, emergency services have the highest call out rates in the UK.



During the summer of 2016 the Society gave holiday employment to Jamie Park, a History student at St Andrews University, enabling him to compile in conjunction with myself and Ben, a record both written and photographic, of over 700 items of Society memorabilia. As Jamie was a Lifeguard for several years, he had the necessary water safety qualifications, making him an ideal person to have working at the wharfage, as he could readily assist with river work if required.



A History of the Society was also compiled and it is also to be found on the web site

The system where lifebelt positions are located by Global Satellite Positioning, is being progressed but it is very time consuming and at times, as we rely so much on input from third parties, very slow in its development. Glasgow City Council are assisting Glasgow Humane

Society with producing an App that will show the position of all lifebelts along Glasgow's waterways, give the lifebelt numbers, and notify access routes, type of banking and any local dangers.



Many of the "safety" ideas set up by the Society are bearing fruition, not least the boom gates at necessary positions along the river. Since these were established we have had no motor cars driven into the river and very little "fly tipping"



The "Tales of the Riverman" (on line magazine) produced by myself with graphics by Chris, is proving extremely popular and is being emailed all over the world, with many of my friends resending them to their friends.

We continue to work with Police Scotland by further developing the GPS system and the search and recovery of missing persons, drugs, weapons and supplying expert advice.



Advice and/or assistance was sought on an almost daily basis Among those seeking our advice were the following---Glasgow Life; Land and Environmental Services; Community Safety Glasgow; Development and Regeneration Services; North Lanarkshire Council; South Lanarkshire Council; Forestry Commission; Peel Holdings (Clydeport); SEPA; Scottish Water; Police Scotland; Scottish Fire and Rescue; Clubs,

Universities, Schools GHS are pleased to see the following groups whom we assisted in establishing, doing well; Lochwatch Loch Awe, Foyle Search and Rescue, Safe Tay We are also pleased to have given safety advice to several Councils and Groups in Scotland, England and Northern Ireland—nice to know that our safety advice is being looked at and that several areas are establishing Water Safety Groups similar to the Glasgow Humane Society/Glasgow City Council Water Safety group

The following are the statistics from 1st January until 31st December 2016

3,779 Riverbank patrols by Officers, Lifeguards and Riverwatchers;

970 River patrols carried out by Officers and Lifeguards;

954 searches were made for missing people;

1,464 lifebelts were retrieved and replaced. A Samaritan sticker was placed on each lifebelt;

151 meetings were attended;

568 hazards were removed;

12 lost or stolen items were recovered and handed over to Police Scotland;

57 events given safety cover;

22 animal incidents dealt with; 24

training courses were held;

21 talks/Presentations given;

3 Bodies recovered for Police Scotland;

9 Acute rescues, 12 rescues attended, 6 accidents prevented by direct immediate intervention;

Glasgow Humane Society continues to work in close partnership with all departments of the Glasgow City Council, with Clydeport, Police Scotland (Glasgow), and a multitude of other groups.

Thanks of course must go to those who assist

Lifeguards:-Ben Parsonage, Colin Munn, Graeme McGrath, Jamie Park, Christopher Parsonage, Stephanie Dancer-Parsonage, Ian Webster, Seamus Keating, Alex and Lynne MacDonald, Tom A'Hara, and members of Boat Clubs

Riverwatchers, supporters and of course our Directors and Members
Glasgow Humane Society as ever is ready and willing to rise to all future challenges.

The following are some of the groups we work with or have advised

