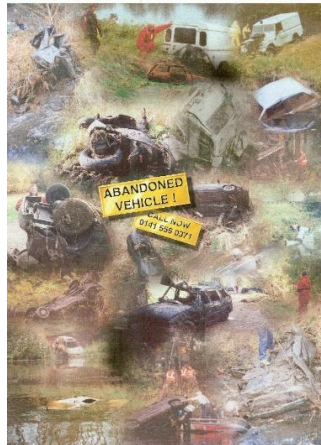


# TALES OF THE RIVERMAN 102 MARCH 2022



Due to happenings across the world, I have not felt like writing any Tales. However, I think that we should show that life can continue as normal. I am surprised, considering how parochial my Tales must be, that they reach so many parts of the world. Today's is a tale of local vandalism, which, while being of importance, totally pales into insignificance in comparison to the wanton destruction of property and disrespect for human life that is occurring further afield just now. Many of my Tales have been about the saving of lives, and methods of preventing accidents. Every life saved and every accident prevented is worth it. Herewith, my simple Tale.



I read in the press today that nine cars dumped at the bottom of a Renfrewshire reservoir since the 1990s have been removed. The rusted vehicles were revealed at Lower Glen Dam in Gleniffer Braes country park, Paisley, after water levels fell in a dry spell last year. A new park gate has been installed to prevent illegal dumping in future.



It is quite a number of years since dumped vehicles were removed from the river Clyde between the weir and Westhorn. We have had some selection of vehicles over the years; an articulated lorry full of sweets (Tale 36); a refrigerated ice cream van; a crane and an emergency services vehicle, complete with blue light.

Army, Council, private firms and, when money was difficult to find, volunteers, were all used to remove these eye-sores and dangers to river users. Boom gates, with a “daisy chain” lock system, were erected at the necessary riverside path entry points, to prevent such dumping, and years later we can say with pride that they have been a success, and will continue to be so, as long as people remember to lock them. These prevention methods are documented in my Architectural Handbook for Safe Waterways (accepted by the Water Safety Group and referred to by several Councils).

<https://www.parsonageriverman.com/resources>



It is a shame that Councils have to take such preventive methods but if a vehicle is driven into the river, it should be immediately checked out to ensure that no one is in it. If the vehicle is lying just under the water and close enough to the surface to be a hazard to river users, then it must be marked with a buoy and removed as soon as possible.

